



**포항 | 산업도시에서
환경도시로의 대전환**

Pohang GreenWay Vision 2030

Topic

**From Industrial City
to Environmental City**

: Pohang GreenWay Vision 2030

Lecture for
World Journalists Conference

2025.3.31.



Hello, I'm Kang-deok Lee,
the mayor of Pohang.
(2014-now)
Glad to meet you.

Contents

intro

Pohang City and the Climate Change

Topic

Transformation into Green Environmental City
via GreenWay

Pohang GreenWay Vision 2030

01. Green Connector Networks
which Link Forestal Trails and Waterways
 02. Compact City where the Residents
Walk and Enjoy Lives
 03. Securing Urban Resilience
in Response to the Climate Crisis
-

Intro. Pohang City and the Climate Change

From Remote Wilderness To Global Venue of Steel Industry

Pohang where the Yeongilman Bay's Miracle Has Occurred

1965

pohang
포항시

posco

2025



Since Paris Climate Accords 2015

Actions against the Climate Change

Conférence sur les Changements Climatiques 2015

COP21/CMP11

Paris, France



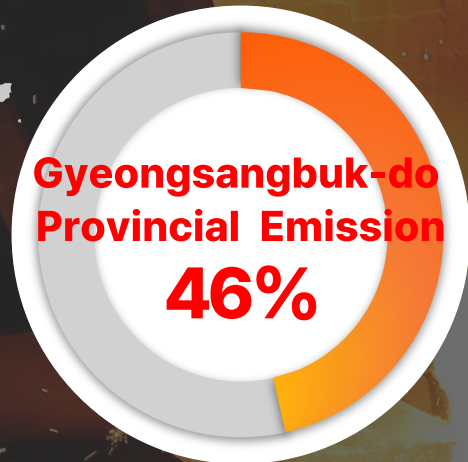
The accords aims to limit the global average temperature increase to well below 2°C above pre-industrial levels ,and to pursue efforts to limit it to 1.5°C

Pohang, as an Industrial Venue in the Past

Skyrocketing Growth and Environmental Expense

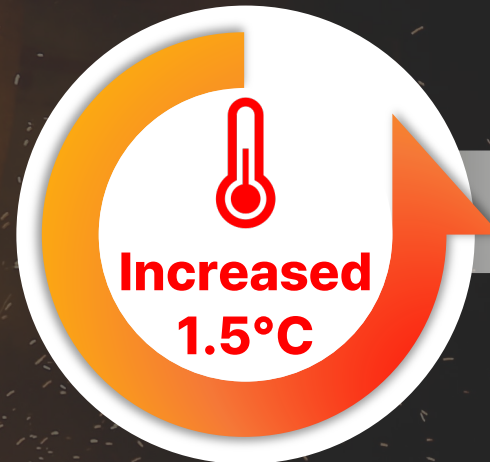
According to the Development of Steel Industry

Carbon Emission
up to 38M tons on Annual Basis,



※5.26% of National Emission as of 2018

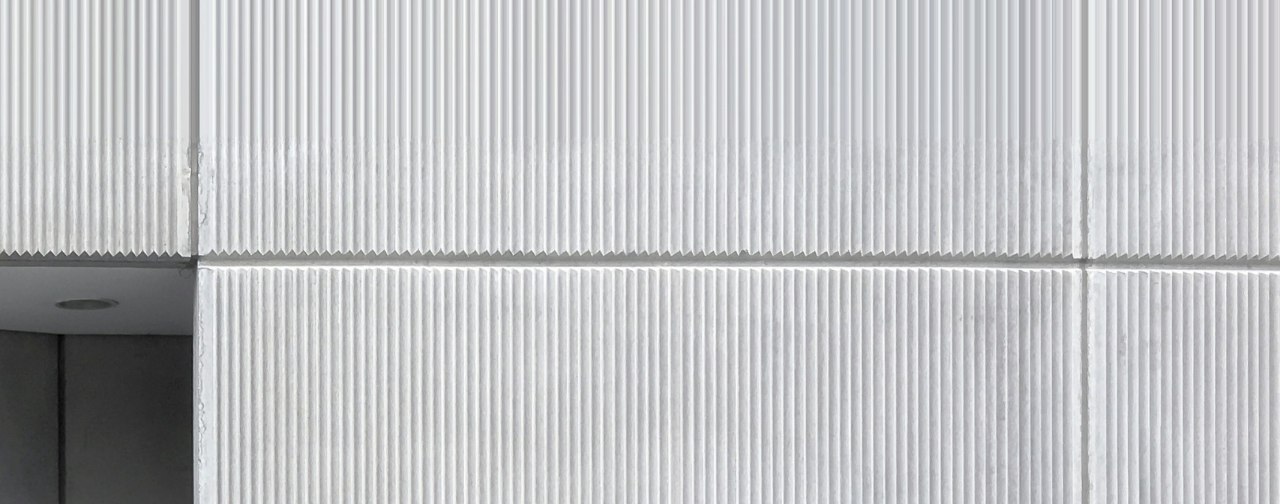
Annual Average Temperature of Pohang City
Increased 1.5(°C) within Recent 30 Years



※ Previous 30 Years (1943~1970) : 13.1°C
Recent 30Years (1991~2020) : 14.6°C



**Desolate
Gray-Colored City
Merely on
Functional Purposes**



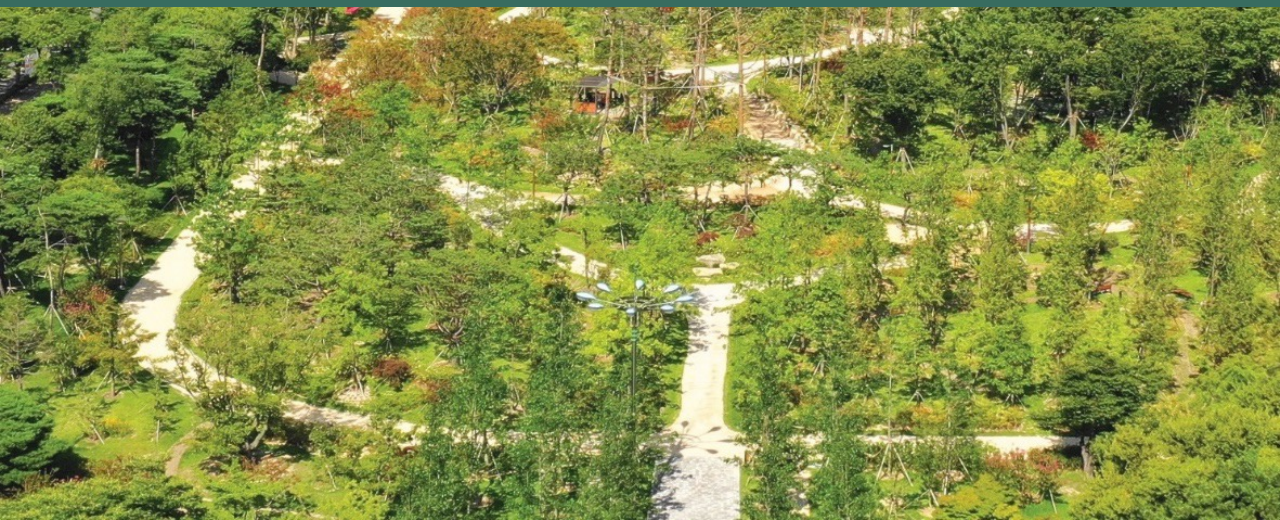
the City of Steel Industry

the City of Greenway

From  To

Gray-Colored City

Green-Colored City

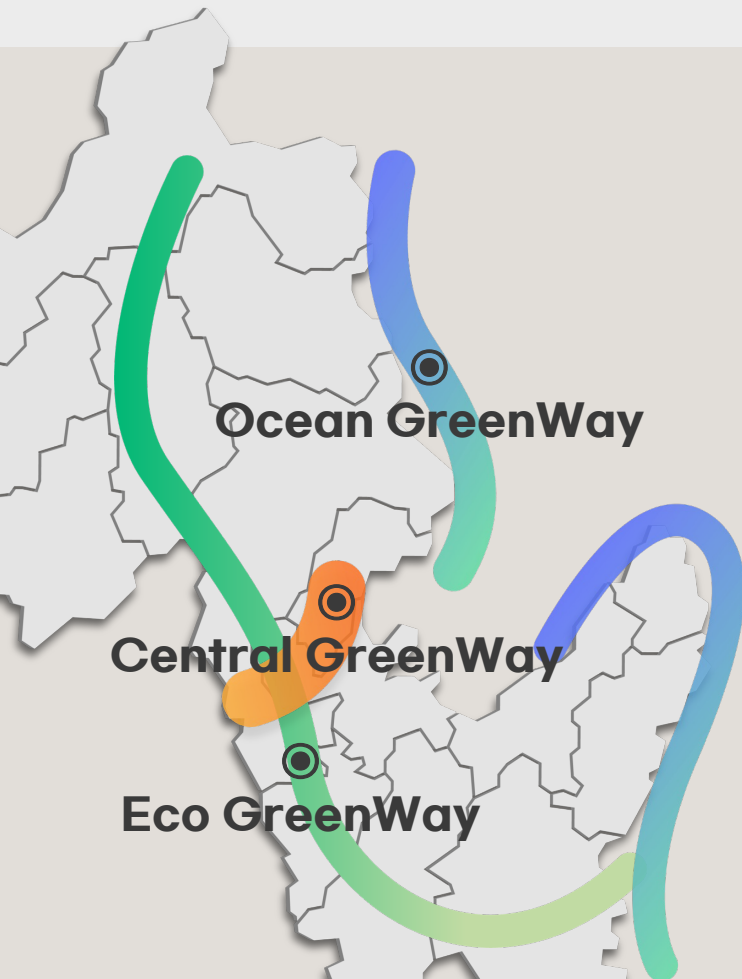


Topic. Transformation into Green Environmental City via GreenWay

Since 2016

Three Routes of Pohang City's GreenWay

Central, Ocean, Eco GreenWay



Central GreenWay

Construction of Railway Forest
Restoration of Four Urban Streams' Ecological System

Ocean GreenWay

Construction of Seashore Trekking Way
Establishment of Homi Peninsular National Maritime Garden

Eco GreenWay

Connecting Circular Trails around Homi Peninsular
Construction of Forest Welfare Complex in Homi Peninsular

Pohang GreenWay Project 2025



Tree Planting
21.56 million trees



Green Area
767,472 m²



Equivalent to
107 Football Pitches

Topic. Transformation into Green Environmental City via GreenWay

Connecting Regional Hubs

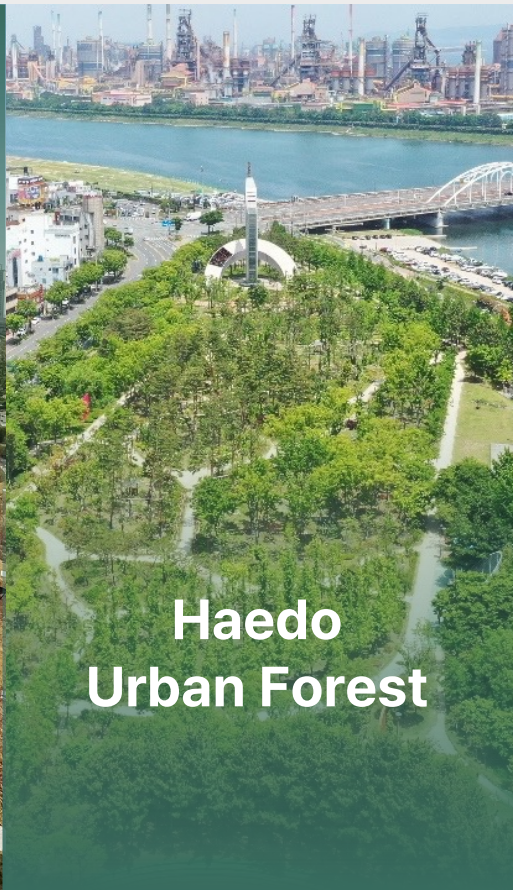
Creation of 5 urban forests



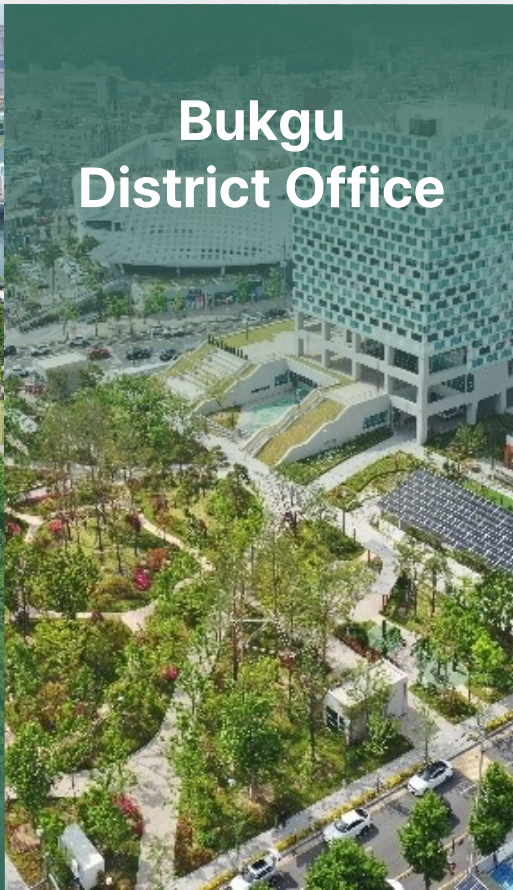
Yeonil
Geunrin Park



Pohang
Railway Forest



Haedo
Urban Forest



Bukgu
District Office



Baetmori
Culture Forest



Before
2014



After
2025

An aerial photograph of a city, likely Pohang, South Korea. A prominent green and blue corridor, representing a park or recreational area, winds through a densely populated urban area. The corridor is highlighted in a vibrant green and blue, contrasting with the grey and brown tones of the surrounding city buildings and roads. The corridor starts in the lower left, curves through the center, and extends towards the upper right. The city is built on a hillside, with a mix of residential houses and larger commercial buildings. In the background, there are mountains and a body of water. The overall scene is a blend of urban development and natural green space.

Total Length 9.3km

Population 194,000 people

adjacent to urban forests

40% of Pohang City's total population

Topic. Transformation into Green Environmental City via GreenWay

GreenWay Project Achievement

Visitors to Railway Forest



* (Unit : persons)

* Aggregated Stats of the Transits in Seven Spots

Weekday
26,833

Weekend
31,476

Topic. Transformation into Green Environmental City via GreenWay

GreenWay Project Achievement

Urban Regeneration Projects

Newly Constructed 190 Buildings around the Obsolete Railway after the Establishment of the Railway Forest
(Among Them, Neighboring Convenience Facilities like Retailing Shop and Restaurant Occupy 65.3%)

→ Conspicuous Evident of Commercial Revitalization Due to the Increasing Transits

* Based on the Research in the zone within 250m

* Cited from: eais.go.kr



Topic. Transformation into Green Environmental City via GreenWay

GreenWay Project Achievement

Revitalization of Local Economy



Topic. Transformation into Green Environmental City via GreenWay

GreenWay Project Achievement

Award History of the Railway Forest



2022, Asian Townscape Awards by UN Habitat

2022, Green Flag Award by Keep Britain Tidy

2022, Model Urban Forest by Korea Forest Service

2020, Grand Prix of Korean Spatial Culture

by Korean Ministry of Culture, Sports and Tourism



The background features a close-up, shallow depth-of-field photograph of vibrant green moss growing on dark, jagged rocks. A semi-transparent, light gray map of the Pohang region is overlaid on the left side of the image, showing its irregular coastline and internal landmasses. The title text is positioned on the right side, separated from the map by a thin vertical white line.

Pohang GreenWay Vision 2030



**Pohang
GreenWay
Vision 2030**

Three Strategies

01.

Green Connector Networks
which Link Forestal Trails and Waterways

02.

Compact City where the Residents
Walk and Enjoy Lives

03.

Securing Urban Resilience
in Response to the Climate Crisis



Strategy 01.

숲길과 물길이 이어지는 Green Connector Network

Green Connector Network
Which Link Forest Roads
and Waterways

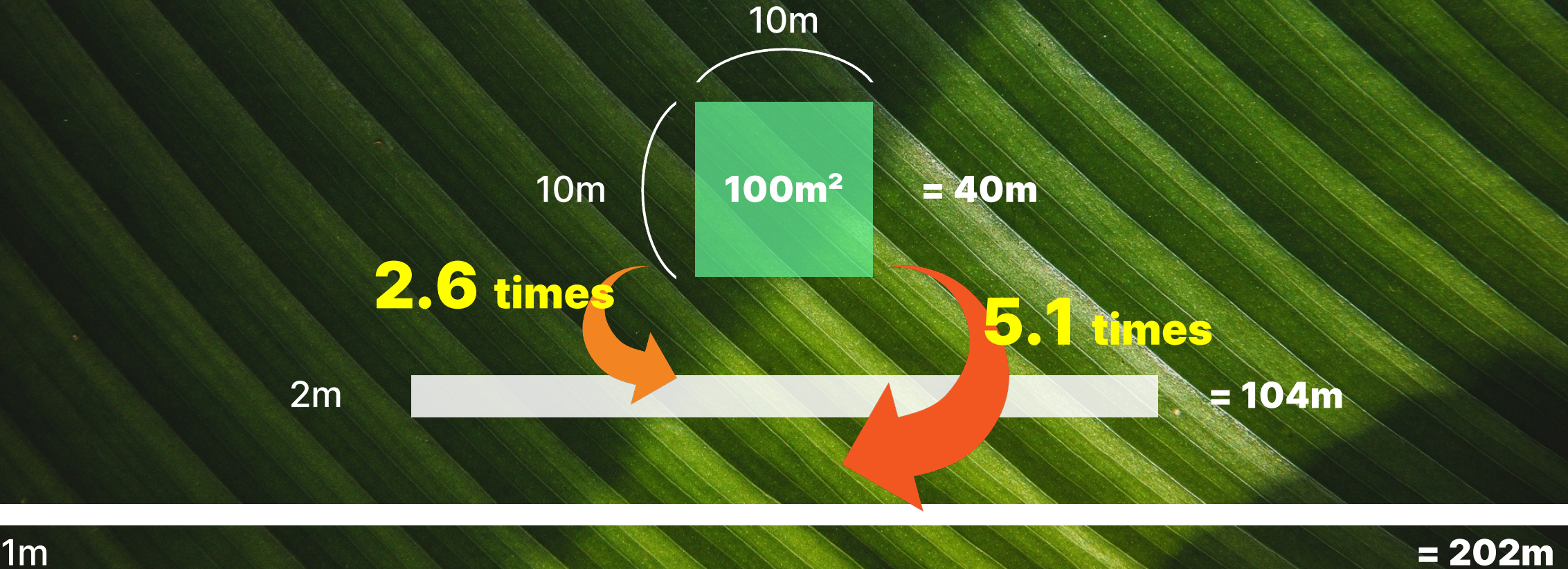
The image features a close-up, macro shot of several green leaves, likely from a plant like a bromeliad, arranged in a fan-like pattern. The leaves are a vibrant green color with prominent, parallel veins. The lighting is soft, highlighting the texture of the leaves. In the center of the image, the text "GreenWay" is written in a clean, white, sans-serif font. A thin white curved line arches under the text, framing it from below. The overall composition is balanced and visually appealing, suggesting a focus on nature and sustainability.

GreenWay

The image features a close-up, high-angle view of a green leaf with prominent, parallel veins. The leaf is set against a dark, almost black background, which makes the vibrant green of the leaf stand out. A thin, white, horizontal oval outline is centered on the leaf, framing the text. The text is written in a clean, white, sans-serif font. The word "GreenLoop" is on the top line, and "GreenWay" is on the bottom line, both centered within the oval.

GreenLoop
GreenWay

Characteristics and advantages of linear green spaces



Strategy 01. Green Connector Networks which Link Forestal Trails and Waterways

Connection between Green Areas and Living, Commercial & Cultural Facilities

From GreenWay to GreenLoop



Expansion of Lineal Parks in Urban Area

Joining Forests, Parks and Streams via the Connection of Forestal Trails and Waterways~Betterment for Access to the Nature

Construction of "One Million Pyeong Park", for Replenishing Urban Green Area

Reserving Absolute Area for the Open Space Corresponding to the Climate Crisis including Retaining Biodiversity

Strategy 01. Green Connector Networks which Link Forestal Trails and Waterways

Forest and Park within 5 Minutes Distance from My Home

Green Connector Network



Circular Green Axis for Pedestrians

- Accessible on Foot, Anywhere in Urban Area
- Increasing Transits by Establishment of Pedestrian-Centered System
- Unification of Boards, Contents, Information and Graphics



Accessible
within Local 300m

GreenLoop

EcoWay

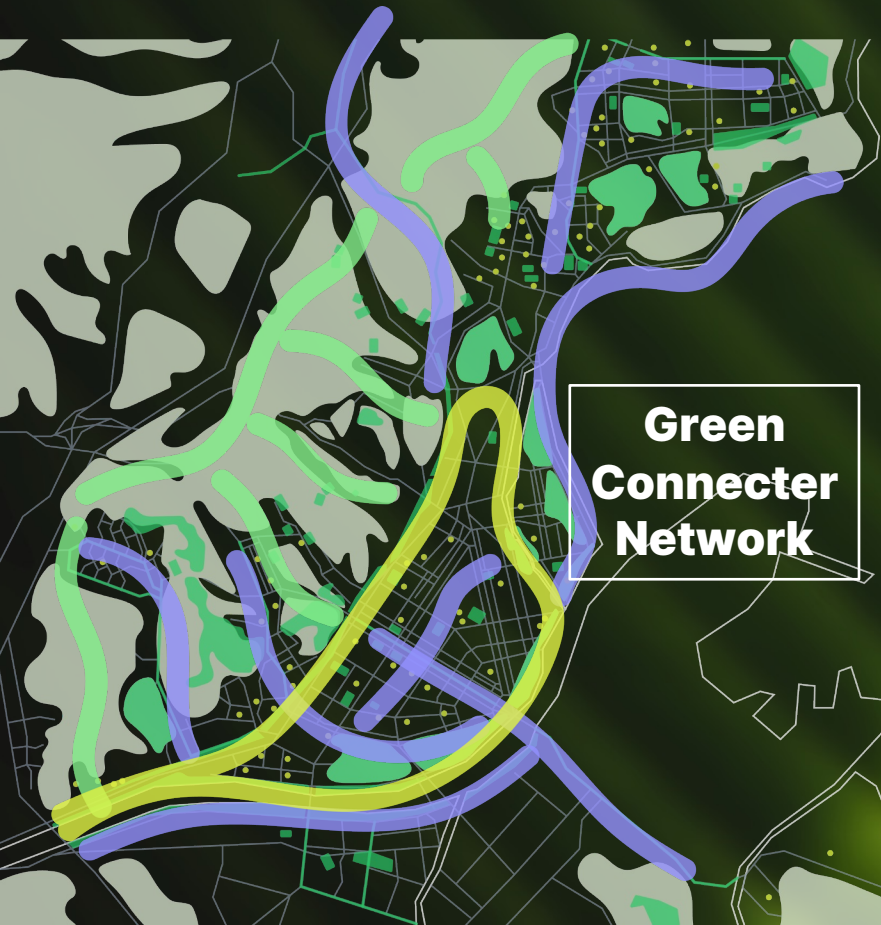
Human Highway

Green
Connector
Network

Strategy 01. Green Connector Networks which Link Forestal Trails and Waterways

포항 그린커넥터 2030 목표

Green Connector 2030 Goal



Now

9.3km

5.7 m²



**4,019,643m²
of New Green Area**

Future(2030)



Human Highway

**Green Pedestrian
Highway**

55.0km



**Urban Forest in
Living Area
per Each Person**

17.7 m²

< WHO Guideline > Urban Forest Area 9m²/1person(min), 15m²/1person(Recommendable),
Preferable that All the Residents should be accessible to more than 500m² of Green Area
within 5 Minutes on Foot



Strategy 02.

도보로 일상을 즐기는 Compact City

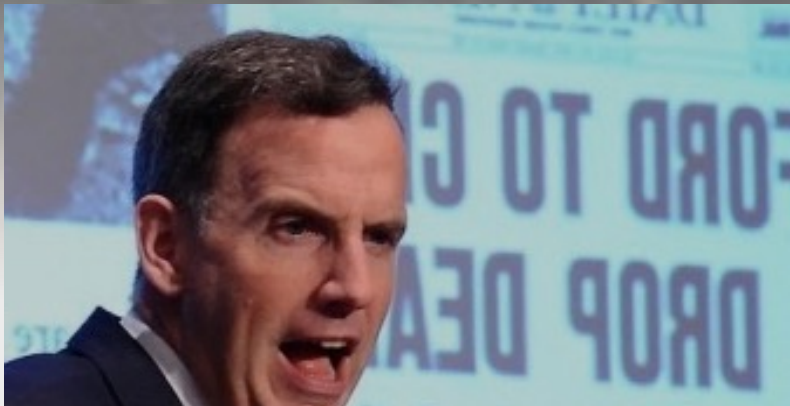
Compact City where the Residents
Walk and Enjoy Lives

po^hang
포항시

Strategy 02. Compact City where the Residents Walk and Enjoy Lives

Rejuvenation of the old city center

Compact city that attracts talented young people



A city's success depends on how well it can retain highly educated young residents.

Edward Glaeser, Prof. of Economy at Harvard Univ.

< Triumph of the City(도시의 승리) >



Sharing City, the socially common benefits increase

A city where the residents share merchandises, time, abilities and information among themselves.

Superb Local Talent

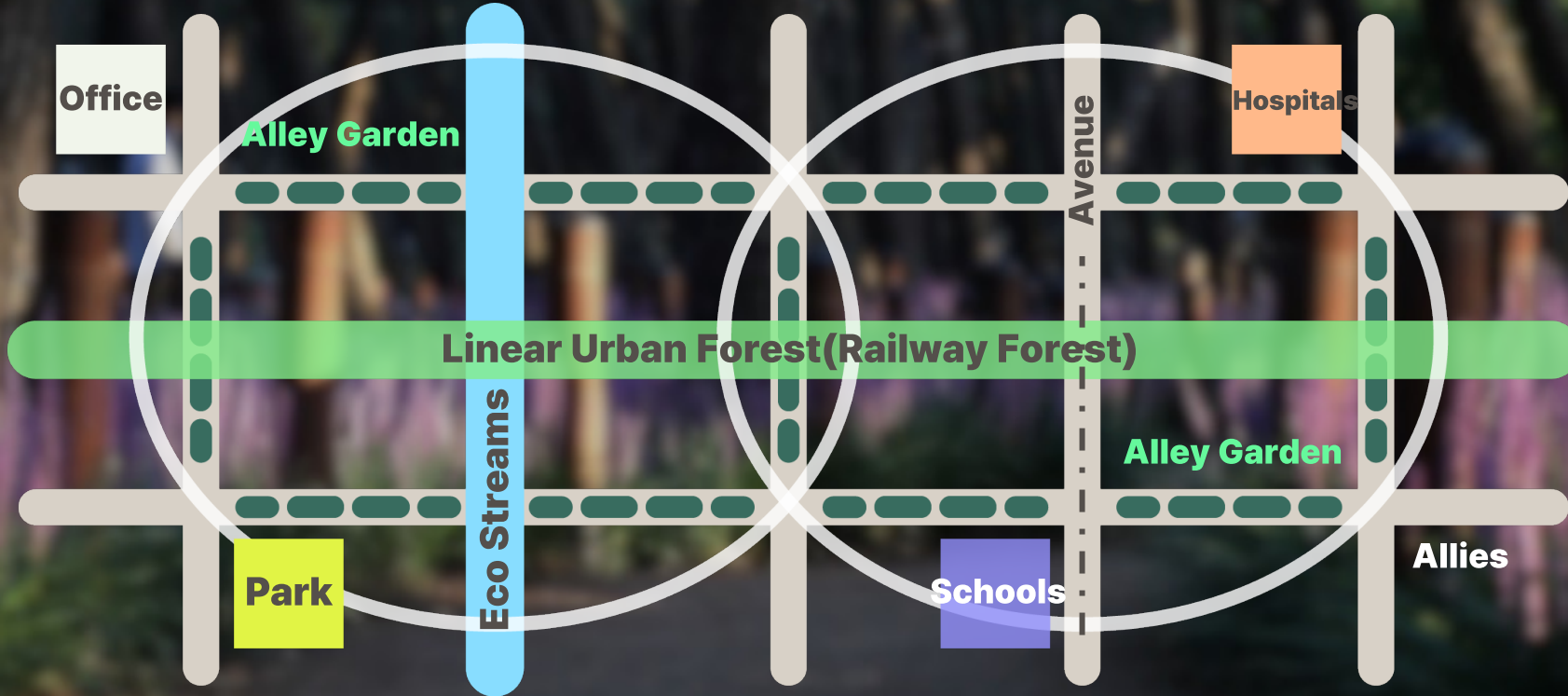
POSTECH : 4,061

Handong Univ. : 4,323
(Persons)

Strategy 02. Compact City where the Residents Walk and Enjoy Lives

Relishing Daily Lives on Forestal Trails

Comfortable '15 Minutes City'



Redesign of Urban Functions

"within the walking boundary" the residents are available to deal with their business, office jobs, education, medical issues and other daily works.

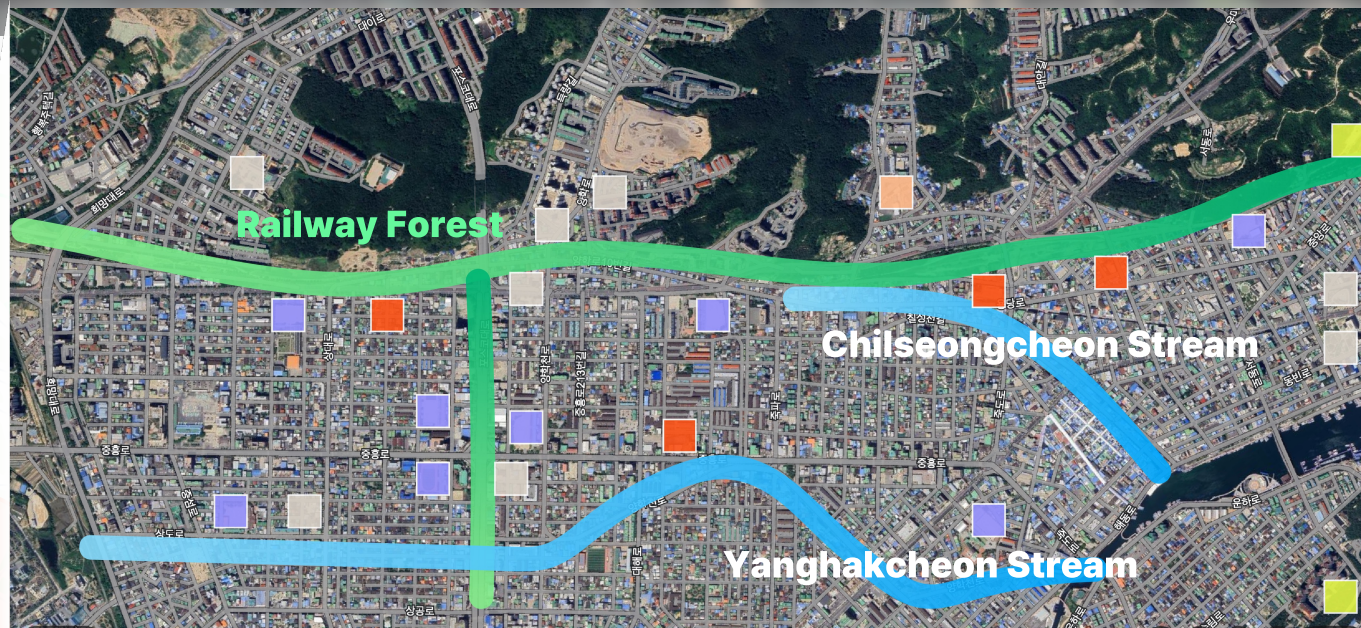
Conversion of Perspectives

From Facilities & Space-centric
To Living & Time-centric

Strategy 02. Compact City where the Residents Walk and Enjoy Lives

Along with the Construction of Sharing City

Convergence of Economy and Knowledge



Talent-Cultivation Project

POBATT Project and Measures for the Innovation of Vacant Buildings and Vacant Houses

Establishment of Practical Venue for sharing

Sharing Offices, Campus Town, Youth Residence etc



Strategy 03.

기후위기 대응 도시회복력(Resilience) 확보

Securing Resilience
in Response to the Climate Crisis

po^hang
포항시

Strategy 03. Securing Resilience in Response to the Climate Crisis

with the establishment of Green Infrastructure

Improving Climate Change Resilience

Alleviator for
Urban Heat Island

3~7°C lower

Atmospheric
Humidity

9~23% increase

Micro Dust
Absorber

47 trees = 1680g

* Base on the Research of NIFoS



Creating Carbon Absorbers with the Construction of Urban Forest



Creating Carbon Absorbers with the Construction of Urban Forest

Now

767,427 m²

107 Equivalent to
Football Pitches

88 CO₂ tons



Creating Carbon Absorbers with the Construction of Urban Forest



4,019,643m²
of New Green Area

Now

Future(2030)

767,427 m²

107 Equivalent to
Football Pitches

88 CO₂ tons

4,787,070 m²

670 Equivalent to
Football Pitches

2,010 CO₂ tons

Certification of the Estimated Volume of
Annual Green House Gas Absorption

Strategy 03. Securing Resilience in Response to the Climate Crisis

through the Creation of Green Area

Securing Disaster Prevention Capabilities



**Urban Ecosystem Restoration
: Road water storage facilities**



ex) 'Rain Garden', Australia

**a buffer zone
in the event of a disaster**



**Disaster
prevention base**



**evacuation site
for citizens**

Strategy 03. Securing Resilience in Response to the Climate Crisis

Announcement of GreenWay Project's Achievement

Pohang, the Pioneering City in a Climate Crisis



United Nations
Climate Change

has presented the achievement of GreenWay
Project in UN COP29

November 2024, Azerbaijan Baku

Hosting the United Nations Global Innovation
Hub (UGIH) Subsidiary Meeting (S.I.W)



Strategy 03. Securing Resilience in Response to the Climate Crisis

Pohang, From Manufacturing City to the City of Contents Industry International Conference Hosting Plan



| 2024 Commencement of POEX's Construction
(Pohang International Exhibition & Convention Centre)

| 2025 Hosting World Green Growth Forum (WGGF)
14-15 May 2025



**대한민국의 탄소중립,
포항이 미래입니다.**

Pohang is the future
of Korea's carbon neutrality.
Thank you.

pohang
포항